

Low Water Use Garden

 **Full Sun**  **Low Water**

1 You'll need 275 ft² of 1 Natural Flag-stone Charcoal

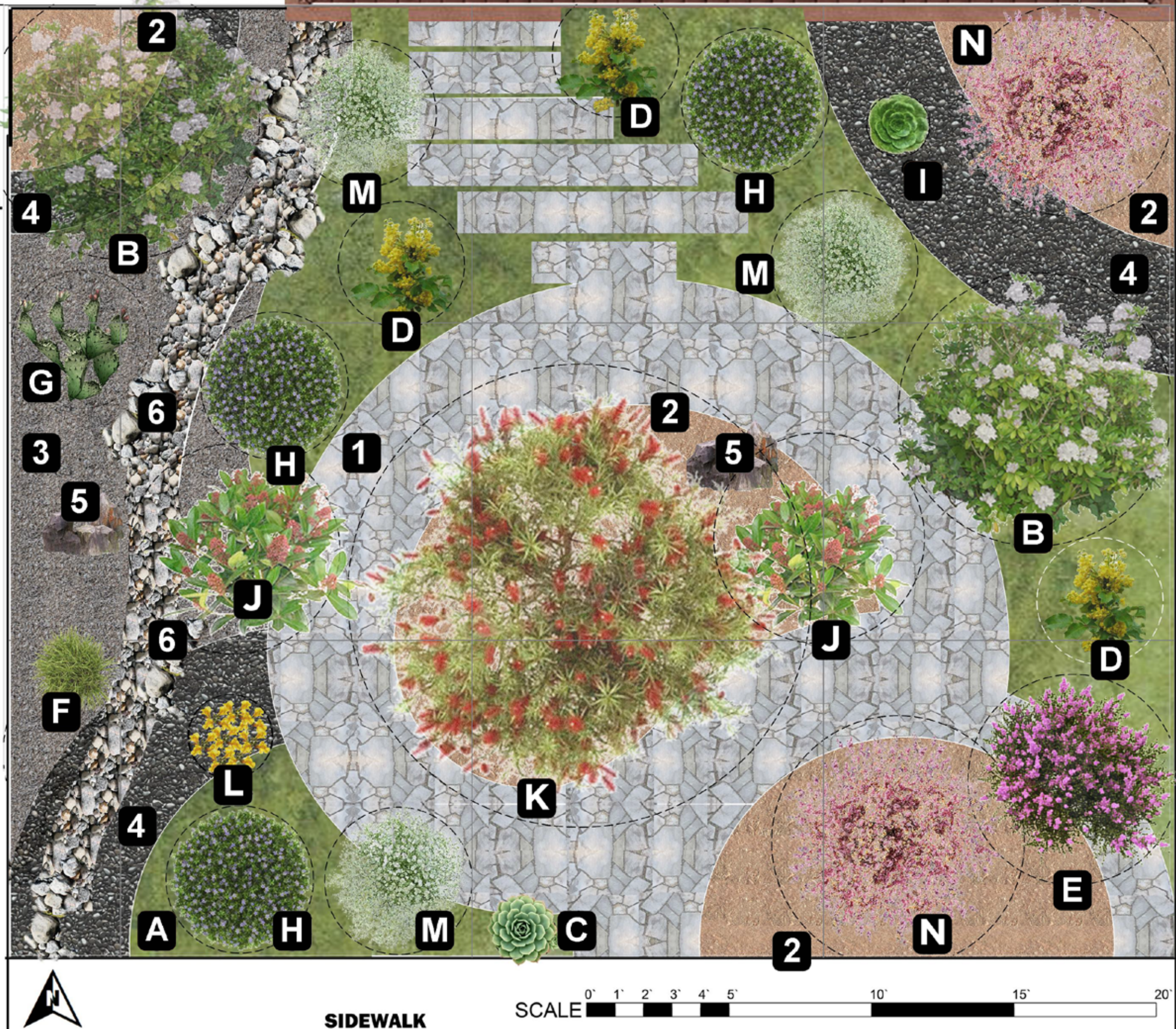
2 You'll need 59 ft³ Mulch

3 You'll need 25 ft³ White DG

4 You'll need 24 ft³ Black Polished pebbles (mixed sizes)

5 You'll need 2 of 5 Rock Style

6 You'll need boulders, rocks, stones, and gravel for rock garden



 <p>A You'll need 293 ft² of A <i>Dymondia Margaretae</i> (Silver Carpet) Sun: Full or partial shade Water: Low Growth Rate: Slow Height: 1" - 3" Width: 1' - 2' Flower Color: Yellow</p>	 <p>B You'll need 2 of B <i>Myoporum parvifolium</i> (Myoporum) Sun: Half or Full Water: Low Growth Rate: Moderate Height: 6"-8" Width: up to 10' Flower Color: White</p>	 <p>C You'll need 1 of C <i>'Echeveria 'Imbricata</i> (Hens and Chicks) Sun: Half Water: Low Growth Rate: Slow Height: 4" - 6" Width: 4" - 8" Flower Color: Orange, Pink, Yellow</p>	 <p>D You'll need 3 of D <i>Mahonia Golden Abundance</i> (Mahonia) Sun: Half Water: Low Growth Rate: Moderate Height: 5' - 8' Width: 4' - 8" Flower Color: Yellow Fruit Color: Blue</p>	 <p>E You'll need 1 of E <i>Lagerstroemia Tuscarora</i> (Tuscarora Crape Myrtle) Sun: Full Water: Low Growth Rate: Moderate Height: 18' - 25' Width: 15' - 18' Flower Color: Lavender, Red, Pink, White</p>
 <p>F You'll need 1 of F <i>Acorus Gramineus 'Ogon</i> (Golden Sweet Flag) Sun: Full Water: Average Height: 6" - 12" Width: 1' - 2'</p>	 <p>G You'll need 1 of G <i>Opuntia ficus-indica</i> (Indian Fig Prickly Pear, Spineless Prickly Pear) Sun: Half Water: Low Growth Rate: Moderate Height: 10'-18' Width: 10'-18' Flower Color: Orange, Yellow Fruit Color: Purple</p>	 <p>H You'll need 3 of H <i>Salvia clevelandii</i> (Cleveland Sage, Fragrant Sage) Sun: Half Water: Low Growth Rate: Fast Height: 4' - 5' Width: 4' - 5' Flower Color: Lavender</p>	 <p>I You'll need 1 of I <i>Aeonium arboreum</i> (Aeonium) Sun: Shade Water: Low Growth Rate: Moderate Height: 2' - 3' Width: 2' - 3' Flower Color: Yellow</p>	 <p>J You'll need 2 of J <i>Justicia californica</i> (Chuparosa, aka <i>Beloperone californica</i>) Sun: Half Water: Low Growth Rate: Moderate Height: 4' - 6' Width: 6' - 8' Flower Color: Red, Orange, Yellow</p>
 <p>K You'll need 1 of K <i>Arbutus unedo</i> (Strawberry Tree) Sun: Half Water: Low Growth Rate: Moderate Height: 15- 30' Width: 15- 30' Flower Color: White, Pink Fruit Color: Red</p>	 <p>L You'll need 1 of L <i>Mimulus longiflorus</i> (Bush Monkeyflower) Sun: Full Water: Low Growth Rate: Fast Height: 1' - 3' Width: 1' - 3' Flower Color: Orange</p>	 <p>M You'll need 3 of M <i>Carpenteria californica</i> (Bush Anemone) Sun: Shade Water: Low Growth Rate: Slow Height: 4' - 8' Width: 3' - 5' Flower Color: White, Yellow</p>	 <p>N You'll need 2 of N <i>Arctostaphylos glauca</i> (Big Berry Manzanita) Sun: Half Water: Low Growth Rate: Slow Height: 3'-20' Width: 6'-20' Flower Color: Pink, White Fruit Color: Red, White, Pink</p>	