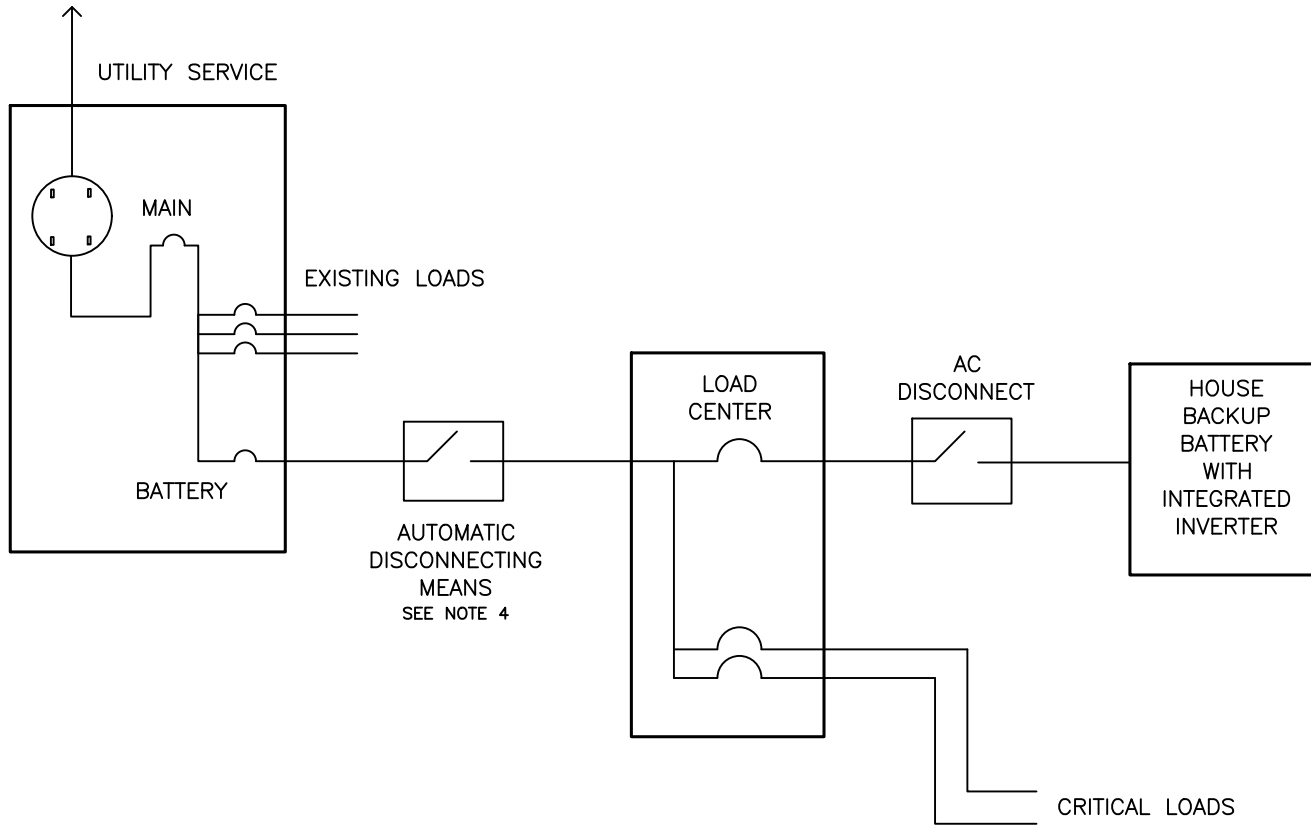
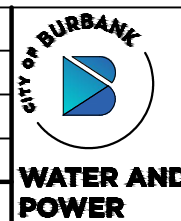


NOTES:

1. ALL INSTALLATIONS REQUIRE PRE-APPROVAL BY BWP. TO OBTAIN PRE-APPROVAL SUBMIT A SINGLE LINE DIAGRAM ALONG WITH A FULL SET OF PLANS TO BWP.
2. ALL DISCONNECTS MUST BE LOCKABLE IN THE OPEN POSITION WITH VISIBLE OPEN, HAVE NO ADDITIONAL ATTACHMENTS, EXTERIOR ACCESSIBLE AND OPERABLE FROM THE GROUND, AND SAFELY ACCESSIBLE TO BWP PERSONNEL AT ALL TIMES.
3. BWP REQUIRES SEPARATE AC DISCONNECTS FOR EACH ENERGY STORAGE SYSTEM.
4. BWP ENGINEERING APPROVED AUTOMATIC DISCONNECTING MEANS IS REQUIRED FOR SYSTEMS THAT CAN OPERATE AS AN INTENTIONAL ISLAND. AUTOMATIC DISCONNECTING MEANS SHALL COMPLY WITH APPLICABLE UL AND NEMA STANDARDS.



No.	REVISIONS	BY	APPR'V'D	DATE
B	STANDARDIZED FORMATTING	MEP	CJC	5/9/23
A	NEW DRAWING	MT	RS	7/19/18



BURBANK WATER AND POWER – ELECTRIC SERVICES	
SINGLE LINE DIAGRAM AC CONNECTED BATTERY SYSTEMS ONLY	
DRAWING No.	S-819B
Sheet 1 of 1	